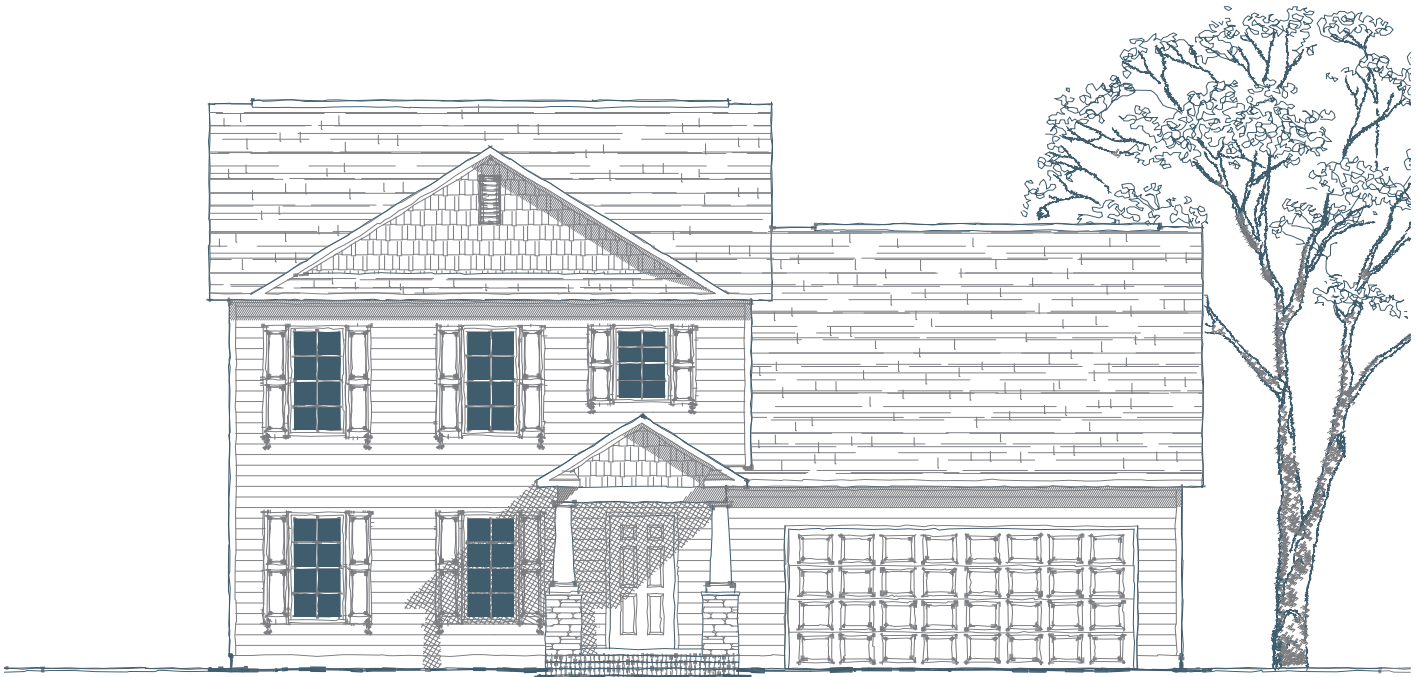


FISHER TRADITIONAL



ISENHOUR
HOMES



Specs:

Bedrooms:	4
Bathrooms:	2.5
Square Footage:	2,338 ft. ²
First Level:	1,161 ft. ²
Second Level:	1,177 ft. ²
Width:	44'-0"
Depth:	36'-2"

Options Shown:

- | | | | |
|----------|---|-----------|---|
| 1 | Screened or Covered Porch | 7 | Side Load Garage |
| 2 | Extended Screened or Covered Porch | 8 | Corner Fireplace |
| 3 | Sunroom (Adds 168 ft. ²) | 9 | Owner's Bath Option |
| 4 | Extended Sunroom (Adds 240 ft. ²) | 10 | Kitchen Island |
| 5 | 3'-0" Wider Garage w/ Two Doors
(Adds 45 ft. ² to Bonus Room) | 11 | Double Vanity |
| 6 | 2'-0" Garage Extension | 12 | Dormer (Adds 47 ft. ² to Bonus Room) |

04/02/2015



Watercolors, illustrations, and floor plans shown are for marketing purposes only and are subject to change at builder's discretion. Square footage is outside veneer and should be independently verified. This is not a legal document.

3411 HEALY DRIVE, SUITE A, WINSTON-SALEM, NC 27103 | 336.659.8211 | ISENHOURHOMES.COM
4330 SOUTHPORT SUPPLY ROAD, SUITE 101, SOUTHPORT, NC 28461 | 910.363.1620

